

Standard 5.7: Total Mesorectal Excision

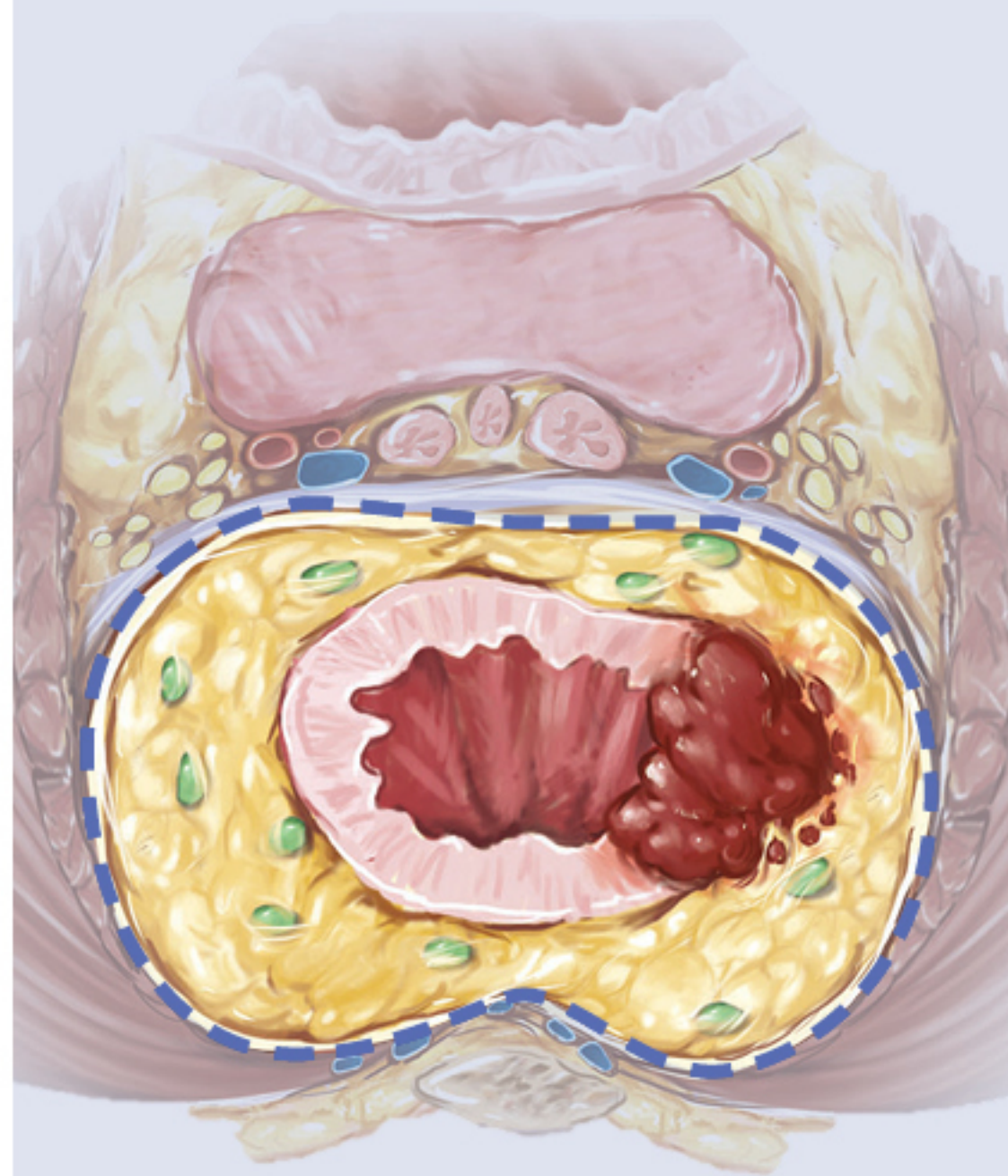
Operation

Total mesorectal excision (TME) is performed for mid and low rectal tumors, resulting in **complete** or **near-complete** TME

Keep fascia propria of rectum intact, operate in plane between rectum and presacral fascia

- Ensures negative margins
- Protects neurovascular structures

Maintain the 'Holy Plane'



Pathology Documentation

Quality of TME documented in synoptic report:

- Complete
- Near-Complete
- Incomplete

When?

2021:
Implementation

2024 site visits:

80%
Compliance